



# Strumenti



VISUAL GUIDELINES\_v1

June 29, 2022

## TYPEFACES

Grifo L Medium

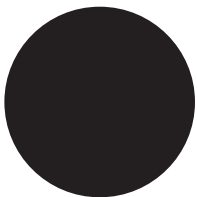
ABCDEFGHIJKLMNOPQRSTUVWXYZ  
abcdefghijklmnopqrstuvwxyz

Gotham

**ABCDEFGHIJKLMNOPQRSTUVWXYZabcdefghijklmnopqrstuvwxyz** Bold  
**ABCDEFGHIJKLMNOPQRSTUVWXYZabcdefghijklmnopqrstuvwxyz** Medium

## COLOR PALETTE

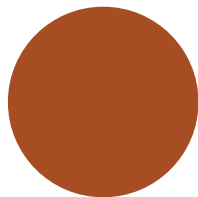
Primary



**CMYK**  
0 0 0 100

**RGB**  
35 31 32

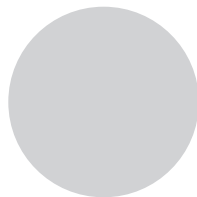
#231F20



**CMYK**  
25 75 100 17

**RGB**  
166 79 37

#A64F25

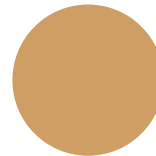


**CMYK**  
0 0 0 20

**RGB**  
209 211 212

#D1D3D4

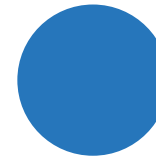
Secondary



**CMYK**  
20 39 69 0

**RGB**  
207 158 101

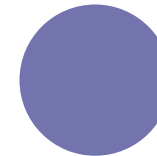
#CF9E65



**CMYK**  
82 50 0 0

**RGB**  
48 119 185

#3077B9



**CMYK**  
61 56 7 0

**RGB**  
117 117 173

#7575AD



## LOGO USAGE

Preferred



Grayscale



Black Only



Reversed





CLEARSPACE



MINIMUM USAGE




---

## SOCIAL MEDIA ICONS





## APPLICATIONS - POSTCARD



# Invest with impact

Invest in shares of rare stringed instruments, and make an impact on the career of a musician.


Fine violins, violas and cellos have appreciated rapidly, becoming prohibitively costly for talented musicians. **Strumenti.com** provides patron-investors with access to these unique investments, while providing promising artists with great instruments to help further their careers.

### How it works


- **Sign up.** Email subscribers will be notified of upcoming offerings.
- **Register and commit.** Invest online in one or more instruments. Just click the link to begin the investment process.
- **Observe the impact.** Patron-investors will receive periodic updates about the instrument and the artist's performances.

info@strumenti.com  
strumenti.com

Visit us at  
strumenti.com



© 2022 Strumenti, LLC. The Strumenti logo and strumenti.com are trademarks of Strumenti, LLC. Violin photography by Jerome Skiscim. "Shares" refers to LLC member interests. Offerings are currently limited to accredited investors. By accessing strumenti.com and/or signing up for our emails, you agree to be bound by the posted Terms of Use and Privacy Policy. You can unsubscribe from emails anytime.



4315 50th St., NW  
Ste. 100, Unit #2525  
Washington, DC 20016

PRSRT STD  
U.S. POSTAGE  
PAID  
SILVER SPRING, MD  
PERMIT NO. 1111